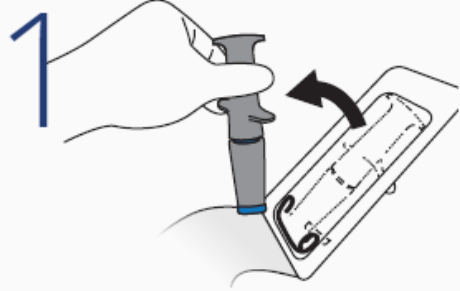
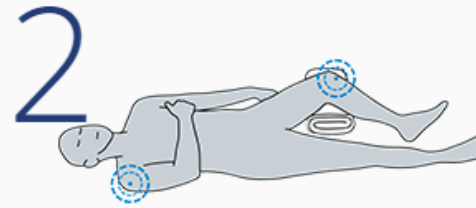


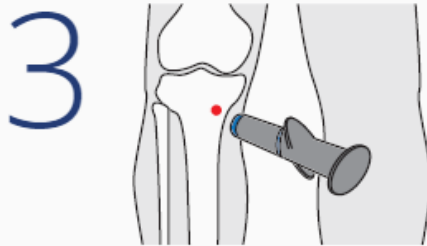
# NIO™ The New IO Device



1 Open the pack and remove the NIO.



2 Locate and disinfect injection site.

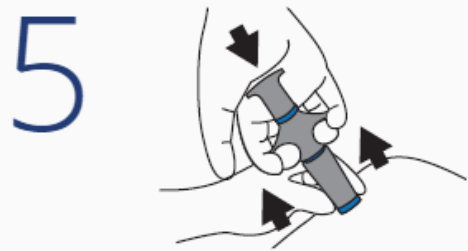


3 Place device approx. 2cm medially and 1cm proximally from tibial tuberosity

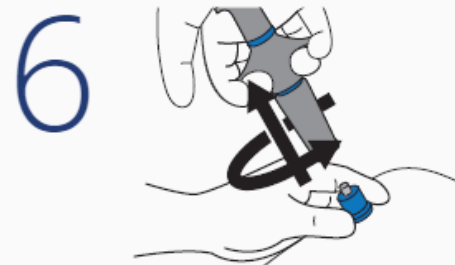
Alternate site: humeral head. See videos for detail.



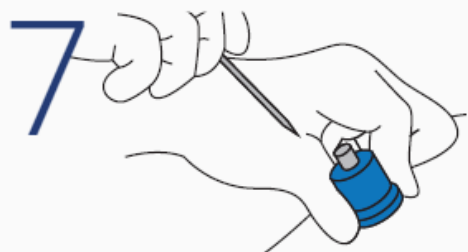
4 Unlock the NIO by rotating the cap 90 degrees in either direction.



5 Place dominant hand over cap, and press device against patient. While pressing down on the device with palm, pull trigger wings upwards with fingers.



6 Gently pull the NIO up in a rotating motion while holding the needle stabilizer against the insertion site.



7 Continue holding the needle stabilizer in place and pull up the stylet to remove.

**BoundTree**  
medical

800.533.0523 | [www.boundtree.com](http://www.boundtree.com)